

# Setting up PC for LMS home access

*Please go through the following steps carefully to ensure your home systems is configured for home access.*

## **Steps:**

*(Hold Ctrl while clicking links)*

- 1) Verify that the latest version of Java is installed ([Click Here](#))
- 2) Verify that you are using Internet Explorer 11 or below ([Click Here](#))
- 3) Run ChangeHost.exe ([Click Here](#))
- 4) Turn off Popup blocker ([Click Here](#))
- 5) Verify that the Java applet is running before logging into LMS ([Click here](#))

## **Still not working?**

Are you in LMS and its still not working properly? ([Click Here](#))

LMS comes up to "Page cannot be displayed" error? ([Click Here](#)) & ([Click here](#)) to resolve

FAQ's: <http://www.darden.com/Dardenis/faq.asp>

## **1. Verify that the latest version of Java is installed**

- ❖ Verification can be done at the following link: <http://java.com/en/download/installed.jsp>
- ❖ The latest version of Java can be downloaded here:  
[http://java.com/en/download/ie\\_manual.jsp?locale=en](http://java.com/en/download/ie_manual.jsp?locale=en)

[Go back to top](#)

## **2. Verify that you are using Internet Explorer 11 or below**

- ❖ LMS Home access is compatible with Internet explorer 11. You should not use any other browser or browser version to access LMS. (Google Chrome, Firefox, Safari, etc. will not work)

*To verify which version of Internet Explorer you are running at the following link:  
<http://windows.microsoft.com/en-us/internet-explorer/which-version-am-i-using>*

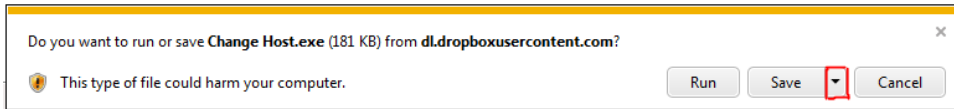
- ❖ Internet Explorer 11 and below are the only browsers approved to work with LMS home access. Other browsers are not supported and using them may result in website errors.

**Note:** If you are using a newer computer with the Windows 10 operating system you must use Internet Explorer 11 or below. Microsoft Edge has known compatibility issues with the website.

[Go back to top](#)

### 3. Running the ChangeHost.exe file

- 1) Download ChangeHost.exe ([Click Here to download](#)).
- 2) Click the down arrow next to “save and select “Save as” and save to your desktop.



- 3) Once downloaded, right click file on your desktop and select “Run as Admin”

[Go back to top](#)

## 4. Turn off Popup blocker

### ✓ How do I turn Pop-up Blocker on or off?

Pop-up Blocker is turned on in Internet Explorer by default. To turn it off or to turn it on again if you've already turned it off, follow these steps:

1. Open Internet Explorer by clicking the **Start** button , and then clicking **Internet Explorer**.
2. Click the **Tools** button, and then click **Pop-up Blocker**.
3. Do one of the following:
  - To turn off Pop-up Blocker, click **Turn Off Pop-up Blocker**.
  - To turn on Pop-up Blocker, click **Turn On Pop-up Blocker**.

[Go back to top](#)

## 5. Make sure that the Java application is running

- ❖ Ensure that the java secure application Manager is running in the bottom right corner:

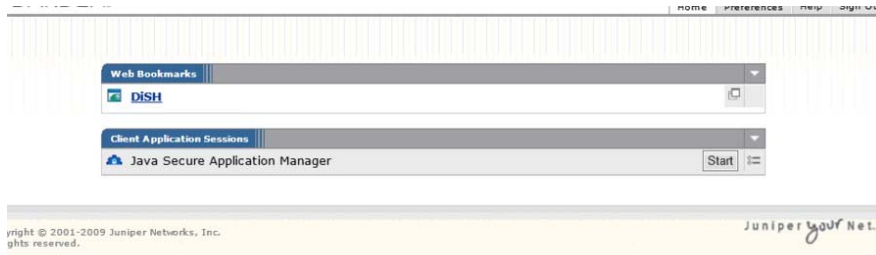


- ❖ You can start it manually by hitting the DiSH icon (top right corner) and hitting the “start” button next to the application.

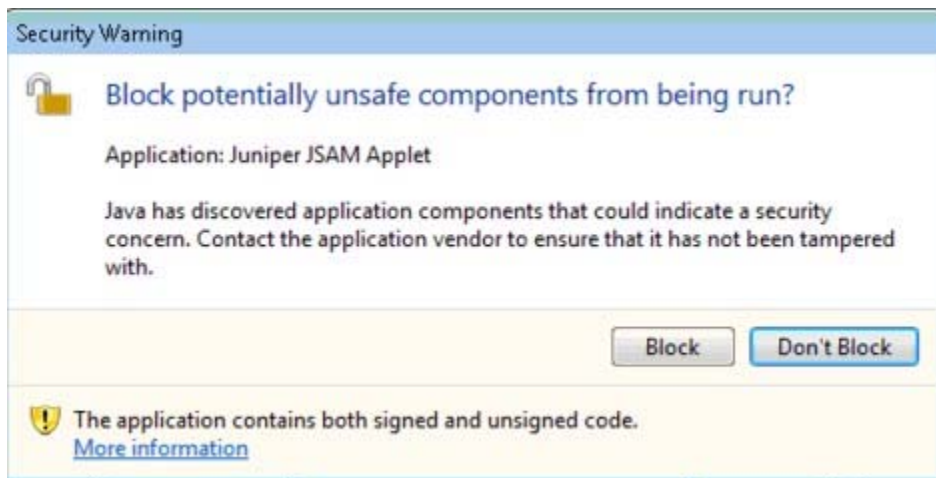
DiSH icon:



Java Secure Application Manager



If you get the following message, select “Don’t Block”



[Go back to top](#)